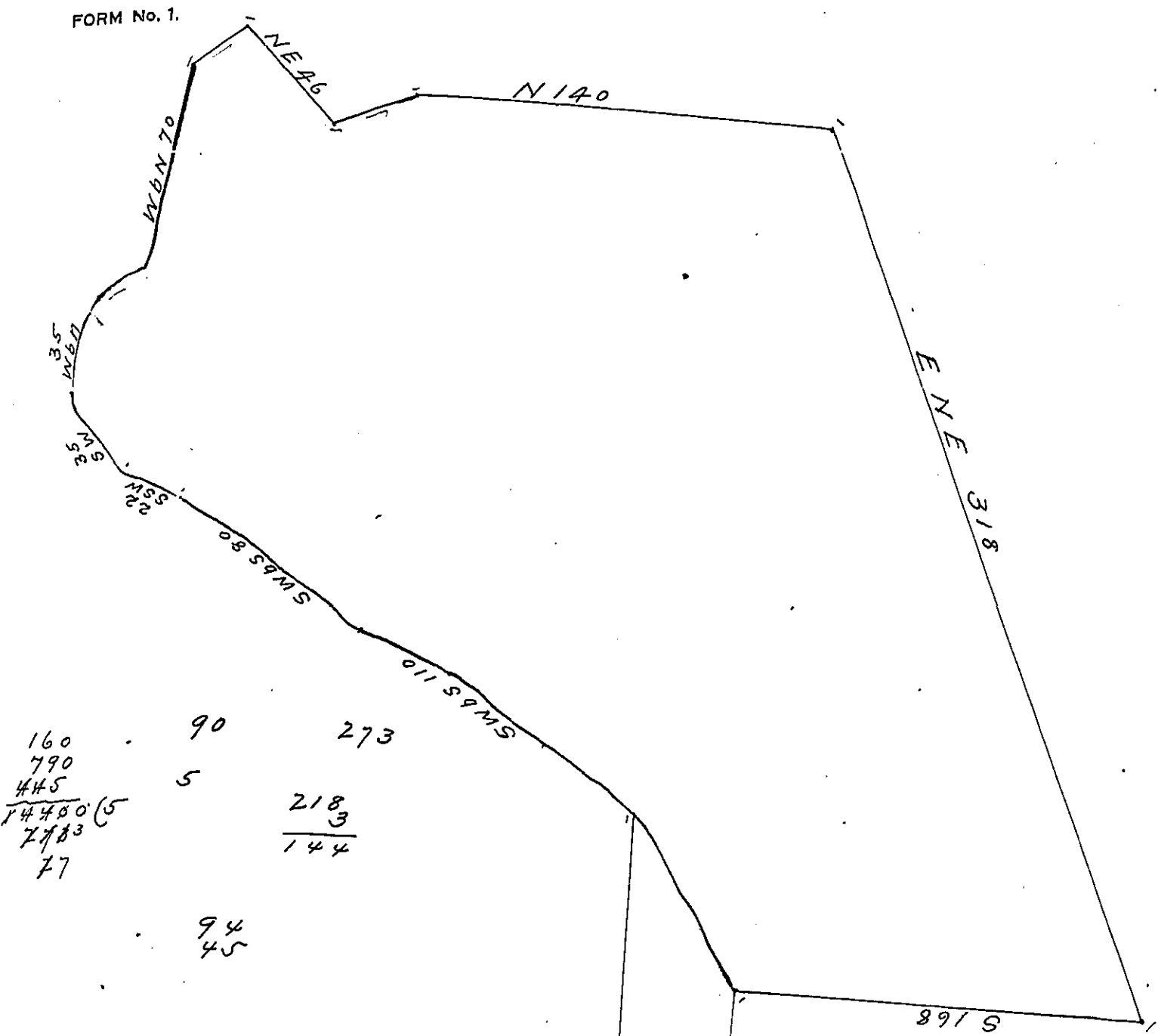


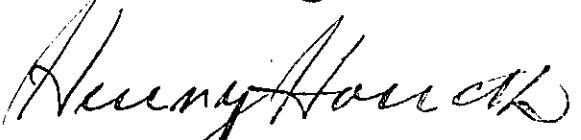
FORM No. 1.



September th. 19: 1682
 by Vertue of A warrent from
 Surveior genrall
 then Surveid for Thomas Pascall
 the West side of Scool creek begining
 and runing W into the Woods 222
 of the sd yookum standing at the
 belongeng to the mill Creek, from thence runing along the S^d brantch
 down to the Maine Creek, then by the Creek on Severá Coarces to A
 marked Spanish oak, from thence N into the Woods 140 to A marked
 White Oak, Then ene 318 perch to a marked White Oak standing by
 W^m Powels line and runing e doune the S^d line 32 perch to W^m Smith
 Corner tree, from thence S along the S^d Smith line to his other Corner
 tree, then e along the S^d Smith line to a Corner tree belongeng to W^m Horn
 then se to the first Corner tree

Cap^{tn} Thomas Holme
 500 Acres of land lieng one
 at peter Yokams Cornertree
 perch to another Cornertree
 head of a Swamp or branch
 p Charles Ashcom

IN TESTIMONY that the above is a copy of the original remaining on file in
 the Department of Internal Affairs of Pennsylvania, made
 conformably to an Act of Assembly approved the 16th day of
 February, 1833, I have hereunto set my Hand and caused
 the Seal of said Department to be affixed at Harrisburg,
 this 10th day of February 1910


 Secretary of Internal Affairs.